

DISTINCTION



ALUMINUM HOPPERS



PRESTIGE
TRAILERS



01_



02_



03_

04_

PRESTIGE TRAILERS. IT'S ALL IN THE DETAILS.



HOPPER / DISTINCTION SERIES

**01_
TWO-PIECE HOPPER DESIGN**

With smooth inside corners, product flows smoothly with very little remaining after unloading, saving time and effort.

**02_
SMOOTH WALLS**

Smooth walls help improve the trailer's structural integrity. Plus, they're easier to clean and look great!

**03_
HOPPER CLEARANCE**

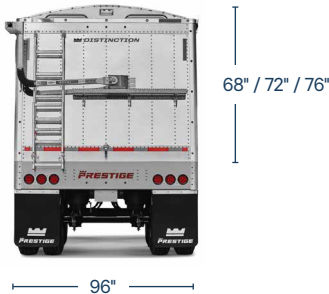
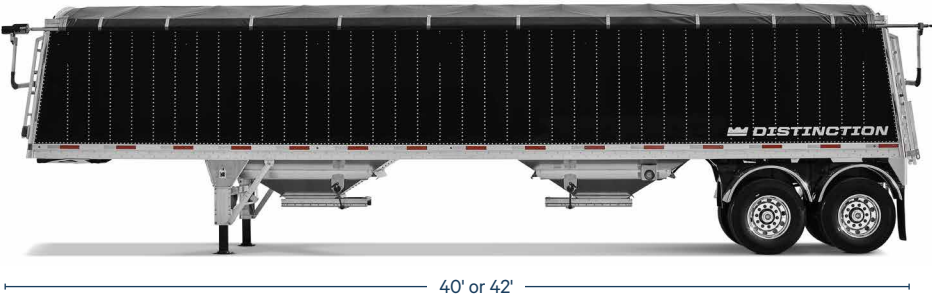
The ag hopper features more than 23" of hopper clearance, allowing for various sizes of swing-away augers to be used during unloading for maximum flexibility.

**04_
FULL CLOSE-OUT SHEETS**

Full close out sheets protect the area above the king pin section and suspension section from road grime and snow buildup. They also reduce drag by eliminating wind turbulence in those areas.



TANDEM



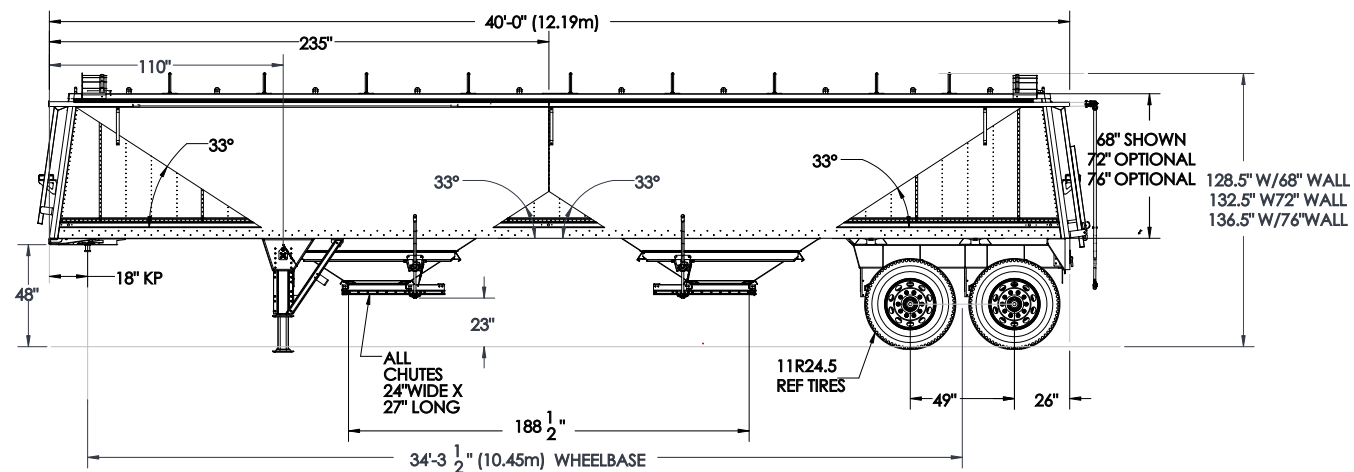
DIMENSIONS			
LENGTH	40' or 42'	KING PIN	18"
EXTERIOR WIDTH	96" Standard	OVERALL HEIGHT	128.5" w/ 68" Wall, 132.5" w/ 72" Wall, 136.5" w/ 76" Wall
INTERIOR WIDTH	92" Standard	SLOPES	Minimum 33°
WALL HEIGHT	68", 72", 76"		

VOLUME (CU. FT.)	40' LENGTH			42' LENGTH		
EXTERIOR WIDTH	96" WIDE			96" WIDE		
WALL HEIGHT	68"	72"	76"	68"	72"	76"
WATER LEVEL	1347	1444	1541	1400	1502	1604

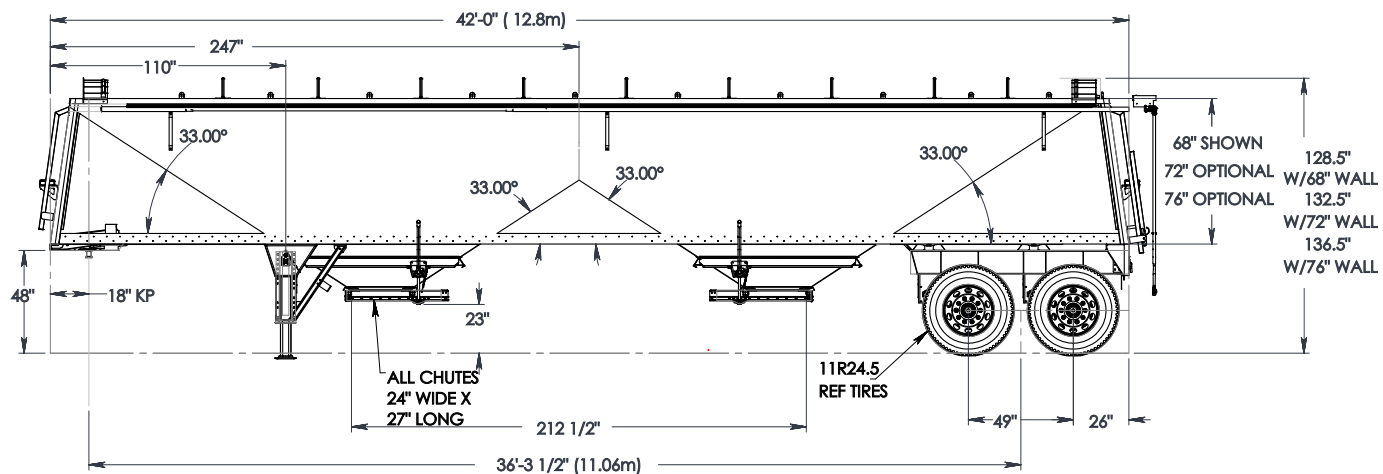
—
REFINED PERFORMANCE.



40' TANDEM



42' TANDEM



—
AT THE TOP OF ITS CLASS.



STANDARD FEATURES



STAINLESS STEEL CHUTE OPENER

The chute opener features a stainless steel shaft with high clearance to avoid contact with swing augers.



SHUR-LOK® TARP SYSTEM

The Shur-Lok® tarp system by Shur-Co® is standard on all Distinction models.



IN-LINE AIR FILTER

The in-line air filter protects the air system from inhaling road debris. The filter is serviceable and replaceable.



REAR LADDER & CATWALK

Standard on all Distinction trailers is ladder access at the front and rear. Catwalks are also added to allow for easier access.



LANDING GEAR

Jost aluminum landing gear with 10 year warranty.

OPTIONAL FEATURES



AUXILIARY AIR SUPPLY

An auxiliary air chuck can be installed inside the air gauge box to supply air for a pneumatic vibrator. This handy outlet can also be used to bring tire pressure up to recommended PSI.



STAINLESS STEEL END WALLS

Stainless steel front and rear walls are available, as well as stainless steel corner posts on all four corners.



ELECTRIC REMOTE TARP OPENER

The Shur-Co® 4500 HD Power Tarp Opener is available as an option which comes with a remote opener. Power trap openers are also available as an option.



FULL CLOSE OUT SHEETS

Full close out sheets protect the area above the king pin section and suspension section from road grime and snow buildup. They also reduce drag by eliminating wind turbulence in those areas.



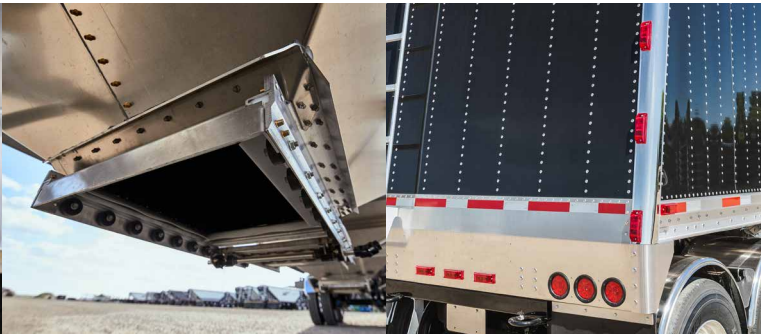
LOADING & UNLOADING LIGHTS

LED loading and unloading lights are available.



LOAD GAUGE BOX

The user-friendly load gauge box features a door with a window to monitor loading and is equipped with an interior light.



OPTIMAL CHUTE OPENING SIZE

The standard ag hopper features a chute opening size of 24" x 27", allowing for quick discharge and easy clean out.



UPPER COUPLER

The upper coupler design is one of the most robust in the industry.



VENTED WALLS

Vents along the lower rail allow for free air movement between the inner and outer walls. This air flow regulates the temperature and humidity differences that produce sweating and cause material to stick to the inside.



FULL COVERAGE MUDFLAPS

Four-across full coverage mudflaps ahead of landing gear are available.



STAINLESS STEEL FENDERS

Stainless steel fenders wrap around the tire to prevent road debris being scattered by tires. The fenders are interconnected with a closure plate between them to protect the trailer.



ALUMINUM SUSPENSION FRAME

An aluminum suspension frame is available as an option.



TIRE INFLATION SYSTEM

Hendrickson TIREMAX PRO.



VIBRATOR BRACKETS

Vibrator brackets are mounted to the hopper.

BODY STRUCTURE

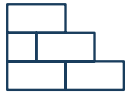
FRONT & REAR WALLS	Double Wall Construction, .063 Pre-Painted Aluminum Outside Skin, White or Black Colour Options c/w Access Ladders and Catwalk; Radius Corners; Other Options Available
HOPPER CHUTES	Standard Opening Size - 24" x 27"; Stainless Chute Shafts; 23 1/8" Clearance (w/ 11Rx24.5 Rubber); Optional 32" x 40" Opening Size (21" Clearance)
HOPPERS	Two Hoppers per Trailer; Center Divider Wall; Two-Piece Hopper Design; Single Row Stiffener On All Sides; Aluminum Chute Frame Huck-Bolted to the Opening
CHUTE OPENER	All-Aluminum Frame; Stainless Steel Rack and Pinion Design; Stainless Steel Trap Door
LANDING GEAR	Jost Magnum Aluminum Landing Gear c/w 10" Cushion Foot; 10 Year Warranty
LIGHTING	Seven Wire Connector at Front; Truck-Lite LED Lighting Standard; Lifetime Warranty Lamps; Truck-Lite Wiring Harness; Other Options Available
MUD FLAPS	1/2" Rubber Anti-Sail Rear Flaps Standard; Other Options Available
PAINT	Three-Stage Paint Process Consisting of a Coating of Zinc, Urethane Primer and Top Coat (applicable to steel sub-assemblies)
SIDE WALLS	Double Wall Construction, .063" Pre-Painted Aluminum Outside Skin, White or Black Colour Options; Inside Finished; Walls Vented; Other Options Available
SLOPES	Aluminum Slope Sheets - No Less than 33°
TARPS & TARP SUPPORTS	Shur-Lok Roll Tarp; Aluminum Roof Bows; Aluminum End Caps; Remote Openers; Other Options Available

RUNNING GEAR

AXLES	Hendrickson INTRAAX .31" Wall, 5 3/4" Round, 71 1/2" Track, HN Spindle; Other Options Available
BRAKE SYSTEM	Air Drum Brake Standard; H20 Brake Linings; Haldex 30/30 Gold Seal; Haldex S-ABA Slack 5.5"; 28 Spline Standard; Wabco ABS Equipped; Other Options Available
FENDERS	Half Round Stainless Steel Fenders Available
HUBS	10 Stud HP Cast Hub/Cast Drum Standard; Other Options Available
SUSPENSION	Hendrickson INTRAAX AANT23K LDA Air Ride Standard; Air Gauge Mounted in an Aluminum Box c/w Window and Light. Other Options Available.
TIRES	Michelin/BF Goodrich Standard; Other Options Available
WHEEL SEALS	National
WHEELS	22.5" Standard; Other Options Available

WITH YOU FOR THE LONG HAUL.

FOR MORE THAN 40 YEARS, PRESTIGE TRAILERS HAS BEEN MANUFACTURING THE FINEST TRAILERS ON THE ROAD. FROM GRAIN TRAILERS AND FLATBEDS TO SPECIALIZED-APPLICATION TRAILERS, PRESTIGE TRAILERS' ATTENTION TO QUALITY AND CUSTOMER CARE SIMPLY CAN'T BE MATCHED.



SOLID FOUNDATION

We've been proud to call Winkler, Manitoba home since 1980. Prestige Trailers has grown from humble beginnings to become one of North America's premier commercial trailer manufacturers. We're building on that foundation, continually growing and innovating as our products take on new challenges year after year. Commitment to these founding principles and our dedication to future growth underpin our company's culture and products.



DRIVEN EVERYWHERE

Prestige Trailers understands our continent's diverse and sometimes harsh landscape. From the majestic Rockies to the big-sky prairies, we're honoured to be one of North America's premier commercial trailer manufacturers. Our wide variety of trailers are built to withstand ever-changing, severe climates, keeping your trailer on the road for years to come.



CRAFTSMANSHIP

Built tough, our no-compromise quality standards are unmatched in the transport trailer industry. Manufacturing within ISO 9001 international standards, we source and use the best materials available, from initial production steps to final finishing. Our goal is always to build a trailer that's engineered to last, whatever our customers put it through. Every trailer is inspected and certified for quality assurance.



PROUD CUSTOMERS

Prestige Trailers are built for drivers who demand more in terms of style, technology, durability and features. Our customers head out on the open road with a sense of pride and have become our ambassadors at large. We never forget that every trailer has our name on it, so we maintain and value the relationships we've formed with fleet operators over the past 40-plus years.



CUTTING EDGE TECHNOLOGY

The latest in automated laser cutting, bending and welding technologies provide the precision and consistency needed to produce top quality components. It's innovative tools like these that help push our products to new heights and make our vision to create the best trailer possible a reality. In our world-class paint facility we also push the boundaries of the transport industry's finishing standards.



LONG TERM RELIABILITY

Long term in our industry means more to Prestige Trailers than we can possibly convey. Our unwavering quest to produce the highest quality trailers has turned into decades of success for our customers. Knowing our durable trailers will withstand heavy use for years to come helps our customers purchase in total confidence. Our premium quality product means minimal downtime, which leads to more time out on the road, getting the job done.



PROUD, DEDICATED AND LOYAL TEAM

Pride, dedication and loyalty are just part of what drives the team at Prestige Trailers. We are committed to maintaining one of the cleanest and safest workspaces around, and place a high level of importance on training and development. This means that our employees are able to develop their skills, which provides both security and opportunities for career development within our growing company.



CUSTOMER SERVICE: OUR PRIORITY

We know exactly how important communication is when you're miles away from home. Technology and customer relations play a large role in how we provide solid service before, during, and after your purchase. As an integrated customer service team working together with our dealer network, we work hand-in-hand with our customers, pro-actively meeting their needs and maintaining the pride they feel in pulling a Prestige Trailers product.



PRESTIGE TRAILERS

BOX 1146, 135 CANADA ST
WINKLER, MB, CANADA, R6W 4B2

PHONE 1-866-797-0669

FAX 1-204-325-5369

PRESTIGETRAILERS.COM

Prestige Trailers is a brand of Triple E Canada Ltd. Product improvement is an ongoing process at Prestige Trailers. Thus we reserve the right to change any specifications or components on any specifications or components on any or all products without prior notice; errors or omissions excepted. Prestige Trailers is under no obligation to undertake modifications to units manufactured prior to changes in specifications. Printed in Canada 01/22.

